

# BIO™ for Microsoft Dynamics™ SL

## BIO Extender

### Benefits

- **Budgeting and Goal Setting**

BIO extender enables analysis that include the entry of budgets, quotas, goals, and baselines. Manage progress in relation to these measures, and receive visual traffic light alerts based on specific thresholds.

- **Create New Analysis**

Building on BIO for Microsoft Dynamics SL's predefined dimensions, extender provides the ability to create new virtual dimensions based on the Microsoft Dynamics SL database.

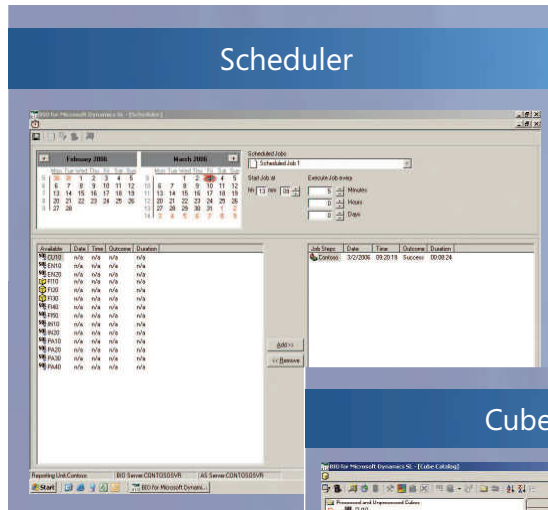
- **Schedule When You Want**

BIO extender lets you define which data is updated and how frequently. For example, define shipper transactions to update every five minutes, but general ledger only once a day. The benefit – you choose when you want data updated.

- **Template and Edit Cubes**

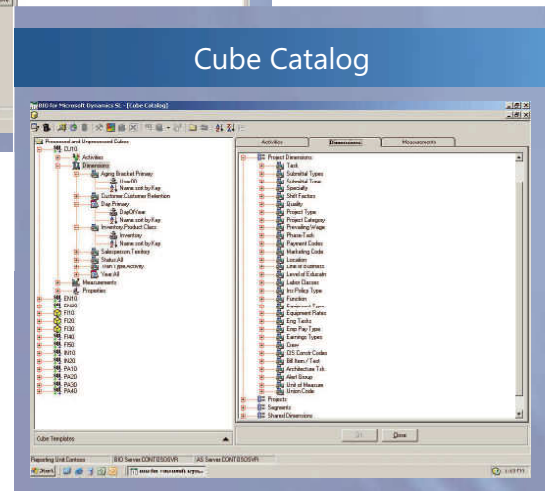
BIO extender comes with cube templates that cover the majority of Microsoft Dynamics SL functionality. Extend, modify or simplify these cubes to the way your organization uses information.

With BIO extender you can create new analysis from templates. Clone a cube to create a modified analysis and keep the original for future use. Use BIO extender to modify, simplify or personalize the experience for your people and improve their usage of valuable information in your Microsoft Dynamics SL system.



*Use BIO extender to create near real-time analysis. You determine the rate at which data is refreshed based on the requirements individual business activities.*

*Clone cubes and modify their properties to create the analysis you want.*



BIO extender helps you manage the underlying Microsoft SQL Server Analysis Services database and its integration/transformation services. It is built to help the non-technical reporting writer to perform these functions without having to learn the underlying advanced technologies.

## BENEFITS

## FEATURES

---

### Easy to tailor

Extend the existing dimensions to include information stored in Microsoft Dynamics SL user and code id fields. This information can be used for informational purposes or to create a new way of aggregating or rolling up information for analytical purposes.

---

### Set business activities to refresh on their own schedule

During the initial setup of BIO for Microsoft Dynamics SL, data is copied from the Microsoft Dynamics SL database to a repository that is optimized for analytic reporting. Normally that repository is updated for all new and changed activity on a single schedule. BIO extender allows you to determine independent update schedules for different business activities. Near real-time updating can be defined for mission critical data like order shippers.

---

### Personalize analytics to your requirements and sophistication

BIO foundation and BIO advanced come with preconfigured cubes covering most business activities and include the most commonly used ways people analyze Microsoft Dynamics SL data (dimensions). With BIO extender the structure of those cubes is templated allowing you to create related cubes or choose from 50 additional dimensions. Two versions of a cube may be created from a cube template with up to 12 hierarchies per cube.

---

### Create a budget or a goal that you can track

By default, cubes are defined as "drill-through," which allows users to drill through from the summary information to the source transaction data. Use BIO extender to modify a cube from "drill-through" to "write-back." A "write-back" cube allows data, such as budgets and goals, to be set for the activities defined within the cube. Now, not only can you track your performance, you can also measure it against a goal or a budget.

---

For more information about BIO for Microsoft Dynamics SL, visit: <http://www.microsoft.com/dynamics/sl>



This document is for information purposes only.

MICROSOFT MAKES NO WARRANTIES, EXPRESS, IMPLIED, OR STATUTORY, AS TO THE INFORMATION IN THIS DOCUMENT.

© 2006 Microsoft Corporation. All rights reserved.

Microsoft, The Microsoft Dynamics Logo, SQL Server, Office, and Excel, are either registered trademarks or trademarks of Microsoft Corporation or Microsoft Business Solutions ApS in the United States and/or other countries. Microsoft Business Solutions ApS is a subsidiary of Microsoft Corporation. BIO is a registered trademark of NexVue Analytics Corporation.

Rev. 03/06

**Microsoft**